

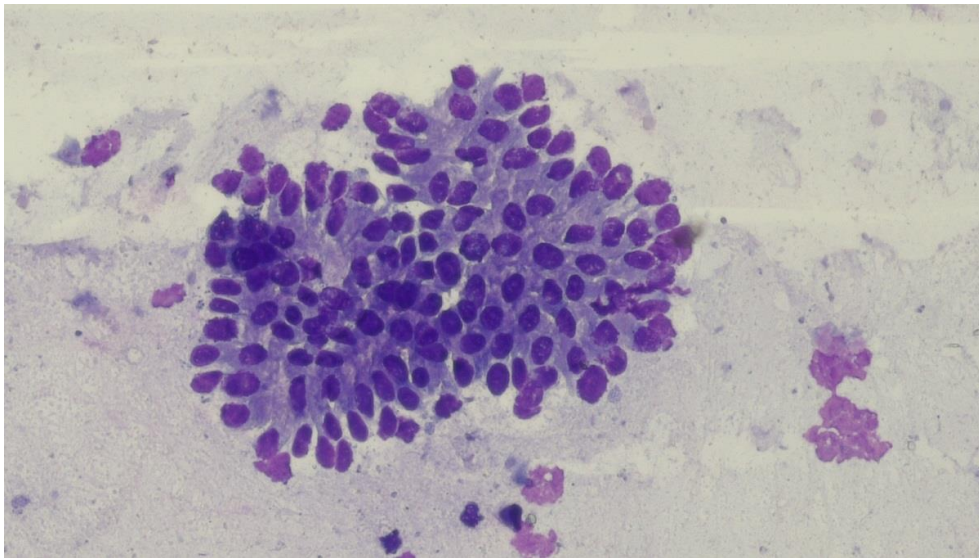
Tips & Tricks #6



Tips & Tricks: Endometrial Swabs

Uterine swab cytology and culture are equally important components of reproductive evaluations in mares. Freshly made smears typically provide samples of excellent quality (Fig A). However, contact with transport media or dehiscence on dry swabs causes cellular degeneration resulting in smears that can be difficult to examine and interpret (Fig B).

A



B

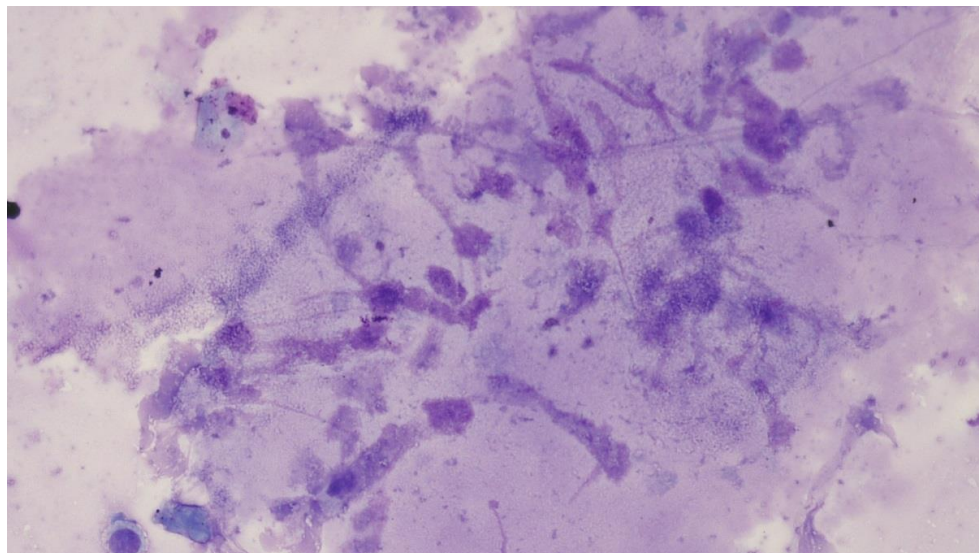


Figure A. Uterine smear prepared at time of examination showing a sheet of normal endothelial cells.

Figure B. Uterine smear made from the same mare following swab transportation. Most cells are degenerate.