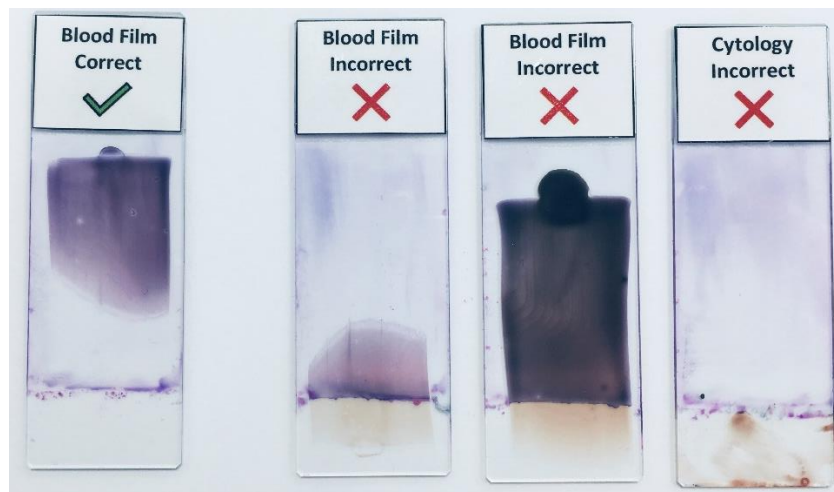


## Blood smear and cytology preparations

SVS Laboratories has recently purchased the Siemens Hematek 3000 semiautomated slide staining system to improve efficiency and staining quality.

Semiautomated stainers stain the middle portion of the upper side of a glass slide, and a blood film or cytology smear prepared outside this area is not stained (see below). The unstained area starts about 13mm from the edge of the glass slide, therefore, we recommend blood films and cytology preparations are made within the staining area.



Slide 1: fully stained smear.

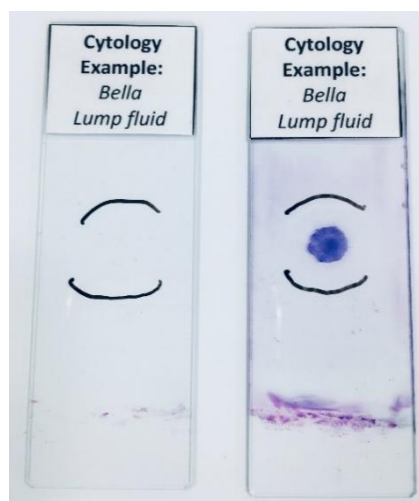
Slide 2: half the film remains unstained

Slide 3: the monolayer and feather edge are not stained

Slide 4: the cytology sample is not stained.

### Additional Cytology Smear Tips:

- Identify the side of the slide which contains the sample (eg patient ID), and if using frosted slides ensure the smear is on the frosted side
- For small samples please mark the glass slide indicating the area of the sample – see image below.



Mark the glass slide to indicate the location of the cytology sample.